

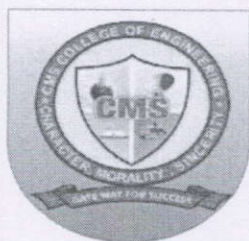
CMS COLLEGE OF ENGINEERING

(Approved by AICTE, New Delhi and Affiliated to Anna University, Chennai-25)
CMS Nagar, Eranapuram Post, Namakkal Dt., Pin : 637 003. Tamilnadu, India.
Contact No: 98433 46065, 84899 10651.

Website: www.cmsgroupofinstitutions.in Email: cmscollegeofengg@gmail.com, principal602@gmail.com

Attainment of PO's and CO's are evaluated

S.No	Contents	Page No
1	CO-PO and CO-PSO Mapping for Computer Science and Engineering	02
2	Expected PO and PSO matrices for 2021-2025 batch (Anna University Regulation 2021)	24
3	Attainment of Course Outcomes for Computer Science and Engineering	27
4	Attainment of Course Outcomes of all courses with respect to set attainment levels	29
5	Assessment tools and processes used for measuring the attainment of each of the program outcomes and program Specific Outcomes	30
6	A Sample CO-PO & PSO attainment form using the assessment tools	31



CMS COLLEGE OF ENGINEERING

(Approved by AICTE, New Delhi and Affiliated to Anna University, Chennai-25)
CMS Nagar, Eranapuram Post, Namakkal Dt., Pin : 637 003. Tamilnadu, India.

Contact No: 98433 46065, 84899 10651.

Website: www.cmsgroupofinstitutions.in Email: cmscollegeofengg@gmail.com, principal602@gmail.com

1. CO-PO and CO-PSO Mapping for the Computer Science and Engineering

Correlation levels:

1. Slight (Low) 2. Moderate (Medium) 3. Substantial (High)
- “-“ No Correlation

I YEAR

CS101	HS3152	PROFESSIONAL ENGLISH - I
-------	--------	--------------------------

CO's-PO's & PSO's Mappings

CO	PO1	PO2	PO3	PO4	PO5	PO6	PO7	PO8	PO9	PO10	PO11	PO12	PSO1	PSO2	PSO3
1	1	1	1	1	1	3	3	3	1	3	-	3	-	-	-
2	1	1	1	1	1	3	3	3	1	3	-	3	-	-	-
3	2	3	2	3	2	3	3	3	2	3	3	3	-	-	-
4	2	3	2	3	2	3	3	3	2	3	3	3	-	-	-
5	2	3	3	3	-	3	3	3	2	3	-	3	-	-	-
Avg	1.6	2.2	1.8	2.2	1.5	3	3	3	1.6	3	3	3	-	-	-

CS102	MA3151	MATRICES AND CALCULUS
-------	--------	-----------------------

CO's-PO's & PSO's Mappings

CO	PO1	PO2	PO3	PO4	PO5	PO6	PO7	PO8	PO9	PO10	PO11	PO12	PSO1	PSO2	PSO3
1	3	3	1	1	0	0	0	0	2	0	2	3	-	-	-
2	3	3	1	1	0	0	0	0	2	0	2	3	-	-	-
3	3	3	1	1	0	0	0	0	2	0	2	3	-	-	-
4	3	3	1	1	0	0	0	0	2	0	2	3	-	-	-
5	3	3	1	1	0	0	0	0	2	0	2	3	-	-	-
Avg	3	3	1	1	0	0	0	0	2	0	2	3	-	-	-



K. Mahadevan
 Dr. K. MAHADEVAN, B.E., M.E., Ph.D.,
 PRINCIPAL
 CMS COLLEGE OF ENGINEERING,
 NAMAKKAL - 637 003.



CMS COLLEGE OF ENGINEERING

(Approved by AICTE, New Delhi and Affiliated to Anna University, Chennai-25)
 CMS Nagar, Eranapuram Post, Namakkal Dt., Pin : 637 003. Tamilnadu, India.

Contact No: 98433 46065, 84899 10651.

Website: www.cmsgroupofinstitutions.in Email: cmscollegeofengg@gmail.com, principal602@gmail.com

CS103	PH3151	ENGINEERING PHYSICS
-------	--------	---------------------

CO's-PO's & PSO's Mapping

CO	PO	PO2	PO3	PO4	PO5	PO6	PO7	PO8	PO9	PO10	PO11	PO12	PSO1	PSO2	PSO3
1	3	3	2	1	1	1	-	-	-	-	-	-	-	-	-
2	3	3	2	1	2	1	-	-	-	-	-	-	-	-	-
3	3	3	2	2	2	1	-	-	-	-	-	1	-	-	-
4	3	3	1	1	2	1	-	-	-	-	-	-	-	-	-
5	3	3	1	1	2	1	-	-	-	-	-	-	-	-	-
Avg	3	3	1.6	1.2	1.8	1	-	-	-	-	-	1	-	-	-

CS104	CY3151	ENGINEERING CHEMISTRY
-------	--------	-----------------------

CO's-PO's & PSO's Mapping

CO	PO1	PO2	PO3	PO4	PO5	PO6	PO7	PO8	PO9	PO10	PO11	PO12	PSO1	PSO2	PSO3
1	3	2	2	1	-	1	1	-	-	-	-	1	-	-	-
2	2	-	-	1	-	2	2	-	-	-	-	-	-	-	-
3	3	1	-	-	-	-	-	-	-	-	-	-	-	-	-
4	3	1	1	-	-	1	2	-	-	-	-	-	-	-	-
5	3	1	2	1	-	2	2	-	-	-	-	2	-	-	-
Avg	2.8	1.3	1.6	1	-	1.5	1.8	-	-	-	-	1.5	-	-	-

CS105	GE3151	PROBLEM SOLVING AND PYTHON PROGRAMMING
-------	--------	--

CO's-PO's & PSO's Mapping

CO	PO1	PO2	PO3	PO4	PO5	PO6	PO7	PO8	PO9	PO10	PO11	PO12	PSO1	PSO2	PSO3
1	3	3	3	3	2	-	-	-	-	-	2	2	3	3	-
2	3	3	3	3	2	-	-	-	-	-	2	2	3	-	-
3	3	3	3	3	2	-	-	-	-	-	2	-	3	-	-
4	2	2	-	2	2	-	-	-	-	-	1	-	3	-	-
5	1	2	-	-	1	-	-	-	-	-	1	-	2	-	-



K. Mahadevan
 Dr. K. MAHADEVAN, B.E., M.E., Ph.D.,
 PRINCIPAL
 CMS COLLEGE OF ENGINEERING,
 NAMAKKAL - 637 003.



CMS COLLEGE OF ENGINEERING

(Approved by AICTE, New Delhi and Affiliated to Anna University, Chennai-25)
 CMS Nagar, Eranapuram Post, Namakkal Dt., Pin : 637 003. Tamilnadu, India.

Contact No: 98433 46065, 84899 10651.

Website: www.cmsgroupofinstitutions.in Email: cmscollegeofengg@gmail.com, principal602@gmail.com

6	2	2	-	-	2	-	-	-	-	-	1	-	2	-	
Avg	2	3	3	3	2	-	-	-	-	-	2	2	3	3	-

CS106	GE3171	PROBLEM SOLVING AND PYTHON PROGRAMMING LABORATORY
-------	--------	---

CO's-PO's & PSO's Mapping

CO	PO1	PO2	PO3	PO4	PO5	PO6	PO7	PO8	PO9	PO10	PO11	PO12	PSO1	PSO2	PSO3
1	3	3	3	3	2	-	-	-	-	-	2	2	3	3	-
2	3	3	3	3	2	-	-	-	-	-	2	2	3	-	-
3	3	3	3	3	2	-	-	-	-	-	2	-	3	-	-
4	2	2	-	2	2	-	-	-	-	-	1	-	3	-	-
5	1	2	-	-	1	-	-	-	-	-	1	-	2	-	-
6	2	2	-	-	2	-	-	-	-	-	1	-	2	-	-
Avg	2	3	3	3	2	-	-	-	-	-	2	2	3	3	-

CS107	BS3171	PHYSICS AND CHEMISTRY LABORATORY
-------	--------	----------------------------------

CO's-PO's & PSO's Mapping

CO	PO1	PO2	PO3	PO4	PO5	PO6	PO7	PO8	PO9	PO10	PO11	PO12	PSO1	PSO2	PSO3
1	3	2	3	1	1	-	-	-	-	-	-	-	-	-	-
2	3	3	2	1	1	-	-	-	-	-	-	-	-	-	-
3	3	2	3	1	1	-	-	-	-	-	-	-	-	-	-
4	3	3	2	1	1	-	-	-	-	-	-	-	-	-	-
5	3	2	3	1	1	-	-	-	-	-	-	-	-	-	-
Avg	3	2.4	2.6	1	1	-	-	-	-	-	-	-	-	-	-

CO	PO1	PO2	PO3	PO4	PO5	PO6	PO7	PO8	PO9	PO10	PO11	PO12	PSO1	PSO2	PSO3
1	3	-	1	-	-	2	2	-	-	-	-	2	-	-	-
2	3	1	2	-	-	1	2	-	-	-	-	1	-	-	-
3	3	2	1	1	-	-	1	-	-	-	-	-	-	-	-
4	2	1	2	-	-	2	2	-	-	-	-	-	-	-	-
5	2	1	2	-	1	2	2	-	-	-	-	1	-	-	-
Avg	2.6	1.3	1.6	1	1	1.4	1.8	-	-	-	-	1.3	-	-	-



Dr. K. Mahadevan

Dr. K. MAHADEVAN, B.E., M.E., Ph.D.,
 PRINCIPAL
 CMS COLLEGE OF ENGINEERING,
 NAMAKKAL - 637 003



CMS COLLEGE OF ENGINEERING

(Approved by AICTE, New Delhi and Affiliated to Anna University, Chennai-25)
 CMS Nagar, Eranapuram Post, Namakkal Dt., Pin : 637 003. Tamilnadu, India.

Contact No: 98433 46065, 84899 10651.

Website: www.cmsgroupofinstitutions.in Email: cmscollegeofengg@gmail.com, principal602@gmail.com

CS108	GE3172	ENGLISH LABORATORY
-------	--------	--------------------

CO's-PO's & PSO's Mapping

CO	PO1	PO2	PO3	PO4	PO5	PO6	PO7	PO8	PO9	PO10	PO11	PO12	PSO1	PSO2	PSO3
1	3	3	3	3	1	3	3	3	3	3	3	3	-	-	-
2	3	3	3	3	1	3	3	3	3	3	3	3	-	-	-
3	3	3	3	3	1	3	3	3	3	3	3	3	-	-	-
4	3	3	3	3	1	3	3	3	3	3	3	3	-	-	-
5	3	3	3	3	1	3	3	3	3	3	3	3	-	-	-
Avg	3	3	3	3	1	3	3	3	3	3	3	3	-	-	-

CS109	HS3252	PROFESSIONAL ENGLISH - II
-------	--------	---------------------------

CO's-PO's & PSO's Mapping

CO	PO1	PO2	PO3	PO4	PO5	PO6	PO7	PO8	PO9	PO10	PO11	PO12	PSO1	PSO2	PSO3
1	3	3	3	3	3	3	3	3	2	3	3	3	-	-	-
2	3	3	3	3	3	3	3	3	2	3	3	3	-	-	-
3	3	3	3	3	3	3	3	3	2	3	3	3	-	-	-
4	3	3	3	3	2	3	3	3	2	3	3	3	-	-	-
5	-	-	-	-	-	-	-	-	3	3	3	3	-	-	-
Avg	3	3	3	3	2.75	3	3	3	2.2	3	3	3	-	-	-

CS110	MA3251	STATISTICS AND NUMERICAL METHODS
-------	--------	----------------------------------

CO's-PO's & PSO's Mapping

CO	PO1	PO2	PO3	PO4	PO5	PO6	PO7	PO8	PO9	PO10	PO11	PO12	PSO1	PSO2	PSO3
1	3	3	1	1	1	0	0	0	2	0	2	3	-	-	-
2	3	3	1	1	1	0	0	0	2	0	2	3	-	-	-
3	3	3	1	1	1	0	0	0	2	0	2	3	-	-	-
4	3	3	1	1	1	0	0	0	2	0	2	3	-	-	-
5	3	3	1	1	1	0	0	0	2	0	2	3	-	-	-



Dr. K. Mahadevan

Dr. K. MAHADEVAN, B.E., M.E., Ph.D.,
 PRINCIPAL
 CMS COLLEGE OF ENGINEERING,
 NAMAKKAL - 637 003.



CMS COLLEGE OF ENGINEERING

(Approved by AICTE, New Delhi and Affiliated to Anna University, Chennai-25)
 CMS Nagar, Eranapuram Post, Namakkal Dt., Pin : 637 003. Tamilnadu, India.

Contact No: 98433 46065, 84899 10651.

Website: www.cmsgroupofinstitutions.in Email: cmscollegeofengg@gmail.com, principal602@gmail.com

Avg	3	3	1	1	1	0	0	0	2	0	2	3	-	-	-
-----	---	---	---	---	---	---	---	---	---	---	---	---	---	---	---

CS111	PH3256	PHYSICS FOR INFORMATION SCIENCE
-------	--------	---------------------------------

CO's-PO's & PSO's Mapping

CO	PO1	PO2	PO3	PO4	PO5	PO6	PO7	PO8	PO9	PO10	PO11	PO12	PSO1	PSO2	PSO3
1	3	1	-	-	-	-	-	-	-	-	-	-	-	-	-
2	3	1	2	-	-	-	-	-	-	-	-	-	-	-	-
3	3	-	-	1	2	1	1	-	-	-	-	-	-	-	-
4	3	-	2	1	3	-	1	-	-	-	-	-	-	-	-
5	3	2	2	2	2	1	2	-	-	-	-	2	-	-	-
Avg	3	1.3	2	1.3	2.3	1	1.3	-	-	-	-	2	-	-	-

CS112	BE3251	BASIC ELECTRICAL AND ELECTRONICS ENGINEERING
-------	--------	--

CO's-PO's & PSO's Mapping

CO	PO1	PO2	PO3	PO4	PO5	PO6	PO7	PO8	PO9	PO10	PO11	PO12	PSO1	PSO2	PSO3
1	2	2	1	-	-	-	-	1	-	-	-	2	-	-	1
2	2	2	1	-	-	-	-	1	-	-	-	2	-	-	1
3	2	1	1	-	-	-	-	1	-	-	-	2	-	-	1
4	2	2	1	-	-	-	-	1	-	-	-	2	-	-	1
5	2	2	1	-	-	-	-	1	-	-	-	2	-	-	1
Avg	2	1.8	1	-	-	-	-	1	-	-	-	2	-	-	1



[Signature]
 Dr. K. MAHADEVAN, B.E., M.E., Ph.D.,
 PRINCIPAL
 CMS COLLEGE OF ENGINEERING,
 NAMAKKAL - 637 003.



CMS COLLEGE OF ENGINEERING

(Approved by AICTE, New Delhi and Affiliated to Anna University, Chennai-25)
 CMS Nagar, Eranapuram Post, Namakkal Dt., Pin : 637 003. Tamilnadu, India.

Contact No: 98433 46065, 84899 10651.

Website: www.cmsgroupofinstitutions.in Email: cmscollegeofengg@gmail.com, principal602@gmail.com

CS113	GE3251	ENGINEERING GRAPHICS
-------	--------	----------------------

CO's-PO's & PSO's Mapping

CO	PO1	PO2	PO3	PO4	PO5	PO6	PO7	PO8	PO9	PO10	PO11	PO12	PSO1	PSO2	PSO3
1	3	1	2	-	2	-	-	-	-	3	-	2	2	2	-
2	3	1	2	-	2	-	-	-	-	3	-	2	2	2	-
3	3	1	2	-	2	-	-	-	-	3	-	2	2	2	-
4	3	1	2	-	2	-	-	-	-	3	-	2	2	2	-
5	3	1	2	-	2	-	-	-	-	3	-	2	2	2	-
Avg	3	1	2	-	2	-	-	-	-	3	-	2	2	2	-

CS114	CS3251	PROGRAMMING IN C
-------	--------	------------------

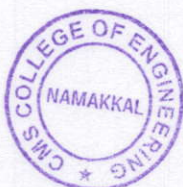
CO's-PO's & PSO's Mapping

CO	PO1	PO2	PO3	PO4	PO5	PO6	PO7	PO8	PO9	PO10	PO11	PO12	PSO1	PSO2	PSO3
1	1	2	2	1	2	1	1	1	2	-	3	2	1	2	-
2	2	2	2	1	2	1	1	1	2	-	3	3	2	2	-
3	2	3	2	1	2	1	1	1	2	-	3	2	2	2	-
4	3	2	2	1	3	1	1	1	2	-	3	3	2	2	-
5	2	3	3	1	2	1	2	1	2	-	3	2	2	3	-
6	2	2	3	2	1	2	-	-	2	1	2	2	2	2	-
Avg	2	2	2	1	2	1	1	1	2	-	3	2	2	2	-

CS115	GE3271	ENGINEERING PRACTICES LABORATORY
-------	--------	----------------------------------

CO's-PO's & PSO's Mapping

CO	PO1	PO2	PO3	PO4	PO5	PO6	PO7	PO8	PO9	PO10	PO11	PO12	PSO1	PSO2	PSO3
1	3	2	-	-	1	1	1	-	-	-	-	2	2	1	1



Dr. K. Mahadevan
 Dr. K. MAHADEVAN, B.E., M.E., Ph.D.,
 PRINCIPAL
 CMS COLLEGE OF ENGINEERING,
 NAMAKKAL - 637 003.



CMS COLLEGE OF ENGINEERING

(Approved by AICTE, New Delhi and Affiliated to Anna University, Chennai-25)
 CMS Nagar, Eranapuram Post, Namakkal Dt., Pin : 637 003. Tamilnadu, India.

Contact No: 98433 46065, 84899 10651.

Website: www.cmsgroupofinstitutions.in Email: cmscollegeofengg@gmail.com, principal602@gmail.com

2	3	2	-	-	1	1	1	-	-	-	-	2	2	1	1
3	3	2	-	-	1	1	1	-	-	-	-	2	2	1	1
Avg	3	2	-	-	1	1	1	-	-	-	-	2	2	1	1

CS116	CS3271	PROGRAMMING IN C LABORATORY
-------	--------	-----------------------------

CO's-PO's & PSO's Mapping

CO	PO1	PO2	PO3	PO4	PO5	PO6	PO7	PO8	PO9	PO10	PO11	PO12	PSO1	PSO2	PSO3
1	1	3	3	1	1	1	-	-	2	1	2	2	2	2	-
2	2	3	3	2	1	1	-	-	2	1	2	2	2	3	-
3	2	2	2	1	1	2	-	-	2	-	2	2	2	2	-
4	2	2	2	2	1	2	-	-	3	-	3	3	3	2	-
5	2	2	3	2	3	2	-	-	3	-	3	3	3	3	-
6	2	2	3	2	1	2	-	-	2	1	2	2	2	2	-
Avg	2	2	3	2	1	2	-	-	2	1	2	2	2	2	-

CS117	GE3272	COMMUNICATION LABORATORY
-------	--------	--------------------------

CO's-PO's & PSO's Mapping

CO	PO1	PO2	PO3	PO4	PO5	PO6	PO7	PO8	PO9	PO10	PO11	PO12	PSO1	PSO2	PSO3
1	2	3	3	3	1	3	3	3	3	3	3	3	-	-	-
2	2	3	3	3	1	3	3	3	3	3	3	3	-	-	-
3	2	2	3	3	1	3	3	3	3	3	3	3	-	-	-
4	3	3	3	3	3	3	3	3	3	3	3	3	-	-	-
5	3	3	3	3	3	3	3	3	3	3	3	3	-	-	-
Avg	2.4	2.8	3	3	1.8	3	3	3	3	3	3	3	-	-	-



Dr. K. Mahadevan
 Dr. K. MAHADEVAN, B.E., M.E., Ph.D.,
 PRINCIPAL
 CMS COLLEGE OF ENGINEERING,
 NAMAKKAL - 637 003.



CMS COLLEGE OF ENGINEERING

(Approved by AICTE, New Delhi and Affiliated to Anna University, Chennai-25)
 CMS Nagar, Eranapuram Post, Namakkal Dt., Pin : 637 003. Tamilnadu, India.

Contact No: 98433 46065, 84899 10651.

Website: www.cmsgroupofinstitutions.in Email: cmscollegeofengg@gmail.com, principal602@gmail.com

II YEAR

CS201	MA3354	DISCRETE MATHEMATICS
-------	--------	----------------------

CO's - PO's & PSO's Mappings

CO's	PO's												PSO's		
	1	2	3	4	5	6	7	8	9	10	11	12	1	2	3
1	3	3	2	-	-	-	-	-	-	-	-	2	-	-	-
2	3	3	-	-	-	-	-	-	-	-	-	-	-	-	-
3	-	3	2	-	-	2	-	-	-	3	-	-	-	-	-
4	-	2	2	2	-	-	-	-	-	-	-	-	-	-	-
5	-	2	2	2	-	-	-	-	-	2	-	-	-	-	-
Avg.	1	3	2	1	-	-	-	-	-	1	-	-	-	-	-

CS202	CS3351	DIGITAL PRINCIPLES AND COMPUTER ORGANIZATION
-------	--------	--

CO's - PO's & PSO's Mappings

CO's	PO's												PSO's		
	1	2	3	4	5	6	7	8	9	10	11	12	1	2	3
1	3	3	3	3	3	2	1	1	1	1	2	3	2	3	3
2	3	3	3	3	2	1	1	1	1	1	2	3	1	2	2
3	3	3	3	3	2	2	1	1	1	1	2	3	2	3	1
4	3	3	3	3	1	1	1	1	1	1	1	2	1	3	1
5	3	3	3	3	1	2	1	1	1	1	1	2	1	2	1
Avg.	3	3	3	3	1.8	1.6	1	1	1	1	1.6	2.6	1.4	2.6	1.6



Signature

Dr. K. MAHADEVAN, B.E., M.E., Ph.D.,
 PRINCIPAL
 CMS COLLEGE OF ENGINEERING,
 NAMAKKAL - 637 003.



CMS COLLEGE OF ENGINEERING

(Approved by AICTE, New Delhi and Affiliated to Anna University, Chennai-25)
 CMS Nagar, Eranapuram Post, Namakkal Dt., Pin : 637 003. Tamilnadu, India.

Contact No: 98433 46065, 84899 10651.

Website: www.cmsgroupofinstitutions.in Email: cmscollegeofengg@gmail.com, principal602@gmail.com

CS202	CS3351	DIGITAL PRINCIPLES AND COMPUTER ORGANIZATION
-------	--------	--

CO's - PO's & PSO's Mappings

CO's	PO's												PSO's		
	1	2	3	4	5	6	7	8	9	10	11	12	1	2	3
1	2	3	1	2	2	1	1	-	1	2	1	3	2	1	3
2	1	2	1	2	2	-	-	-	1	1	1	2	2	2	2
3	2	3	1	2	3	-	-	-	1	1	1	2	2	1	2
4	2	1	-	1	1	-	-	-	2	1	1	2	2	3	1
5	1	2	1	2	2	1	1	-	1	2	1	3	2	2	3
Avg.	2	2	1	2	2	1	1	-	1	1	1	2	2	2	2

CS203	CS3352	FOUNDATIONS OF DATA SCIENCE
-------	--------	-----------------------------

CO's - PO's & PSO's Mappings

CO's	PO's												PSO's		
	1	2	3	4	5	6	7	8	9	10	11	12	1	2	3
1	2	2	1	2	2	-	-	-	1	1	1	2	2	2	2
2	2	1	-	1	1	-	-	-	2	1	1	2	2	3	1
3	2	2	1	2	2	1	1	-	1	2	1	3	2	2	3
4	3	2	2	1	2	-	-	-	1	1	2	2	3	3	2
5	2	2	1	2	2	-	-	-	1	1	1	2	2	2	2
Avg.	2	2	1	2	2	1	1	-	1	1	1	2	2	2	2



Dr. K. Mahadevan
 Dr. K. MAHADEVAN, B.E., M.E., Ph.D.,
 PRINCIPAL
 CMS COLLEGE OF ENGINEERING,
 NAMAKKAL - 637 003.



CMS COLLEGE OF ENGINEERING

(Approved by AICTE, New Delhi and Affiliated to Anna University, Chennai-25)
 CMS Nagar, Eranapuram Post, Namakkal Dt., Pin : 637 003. Tamilnadu, India.

Contact No: 98433 46065, 84899 10651.

Website: www.cmsgroupofinstitutions.in Email: cmscollegeofengg@gmail.com, principal602@gmail.com

CS204	CS3301	DATA STRUCTURES
-------	--------	-----------------

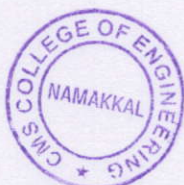
CO's - PO's & PSO's Mappings

CO's	PO's												PSO's		
	1	2	3	4	5	6	7	8	9	10	11	12	1	2	3
1	2	3	1	2	2	1	1	-	1	2	1	3	2	1	3
2	1	2	1	2	2	-	-	-	1	1	1	2	2	2	2
3	2	3	1	2	3	-	-	-	1	1	1	2	2	1	2
4	2	1	-	1	1	-	-	-	2	1	1	2	2	3	1
5	1	2	1	2	2	1	1	-	1	2	1	3	2	2	3
Avg.	2	2	1	2	2	1	1	-	1	1	1	2	2	2	2

CS205	CS3391	OBJECT ORIENTED PROGRAMMING
-------	--------	-----------------------------

CO's - PO's & PSO's Mappings

CO's	PO's												PSO's		
	1	2	3	4	5	6	7	8	9	10	11	12	1	2	3
1	1	1	3	1	3	-	-	-	3	2	2	2	3	1	2
2	2	1	3	2	1	-	-	-	2	1	1	3	3	3	2
3	3	3	1	2	2	-	-	-	3	2	1	2	3	1	3
4	3	1	2	2	2	-	-	-	1	2	1	3	3	1	1
5	1	1	2	3	2	-	-	-	3	2	1	2	3	3	3
Avg.	2	1	2	2	2	-	-	-	2	2	1	2	3	2	2



Handwritten signature

Dr. K. MAHADEVAN, B.E., M.E., Ph.D.,
 PRINCIPAL
 CMS COLLEGE OF ENGINEERING,
 NAMAKKAL - 637 003.



CMS COLLEGE OF ENGINEERING

(Approved by AICTE, New Delhi and Affiliated to Anna University, Chennai-25)
 CMS Nagar, Eranapuram Post, Namakkal Dt., Pin : 637 003. Tamilnadu, India.

Contact No: 98433 46065, 84899 10651.

Website: www.cmsgroupofinstitutions.in Email: cmscollegeofengg@gmail.com, principal602@gmail.com

CS206	CS3311	DATA STRUCTURES LABORATORY
-------	--------	----------------------------

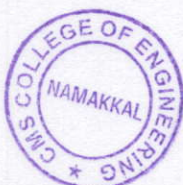
CO's - PO's & PSO's Mappings

CO's	PO's												PSO's		
	1	2	3	4	5	6	7	8	9	10	11	12	1	2	3
1	1	2	2	1	-	-	-	-	2	1	2	2	2	2	3
2	3	3	1	1	-	-	-	-	1	1	1	3	1	2	2
3	2	1	3	1	-	-	-	-	1	1	2	3	3	3	3
4	3	1	3	3	-	-	-	-	1	2	3	3	2	1	2
5	3	2	1	1	2	-	-	-	3	3	3	1	3	1	3
Avg.	2	2	2	1	2	-	-	-	2	2	2	2	2	2	3

CS207	CS3381	OBJECT ORIENTED PROGRAMMING LABORATORY
-------	--------	--

CO's - PO's & PSO's Mappings

CO's	PO's												PSO's		
	1	2	3	4	5	6	7	8	9	10	11	12	1	2	3
1	2	1	2	1	-	-	-	-	1	2	2	2	1	2	3
2	2	1	3	1	-	-	-	-	2	3	3	2	1	3	1
3	2	2	1	2	1	-	-	-	1	2	1	3	2	3	2
4	2	2	1	3	-	-	-	-	3	1	1	1	2	1	2
5	1	3	3	1	3	-	-	-	1	1	1	1	2	1	2
Avg.	2	2	2	2	2	-	-	-	2	2	2	2	2	2	2



Dr. K. Mahadevan

Dr. K. MAHADEVAN, B.E., M.E., Ph.D.,
 PRINCIPAL
 CMS COLLEGE OF ENGINEERING,
 NAMAKKAL - 637 003.



CMS COLLEGE OF ENGINEERING

(Approved by AICTE, New Delhi and Affiliated to Anna University, Chennai-25)
 CMS Nagar, Eranapuram Post, Namakkal Dt., Pin : 637 003. Tamilnadu, India.

Contact No: 98433 46065, 84899 10651.

Website: www.cmsgroupofinstitutions.in Email: cmscollegeofengg@gmail.com, principal602@gmail.com

CS208	CS3361	DATA SCIENCE LABORATORY
-------	--------	-------------------------

CO's - PO's & PSO's Mappings

CO's	PO's												PSO's		
	1	2	3	4	5	6	7	8	9	10	11	12	1	2	3
1	3	2	1	1	-	-	-	-	1	3	3	3	1	3	2
2	3	2	2	3	1	-	-	-	3	1	3	2	1	3	3
3	3	2	1	3	1	-	-	-	2	1	1	1	3	2	3
4	2	3	1	3	-	-	-	-	2	3	2	3	3	3	1
5	1	2	3	1	1	-	-	-	2	1	3	1	1	3	3
Avg.	2	2	2	2	1	-	-	-	2	2	2	2	2	3	2

CS209	CS3452	THEORY OF COMPUTATION
-------	--------	-----------------------

CO's - PO's & PSO's Mappings

CO's	PO's												PSO's		
	1	2	3	4	5	6	7	8	9	10	11	12	1	2	3
1	1	3	2	3	-	-	-	-	1	1	2	3	1	3	2
2	2	2	3	2	1	-	-	-	3	3	2	3	3	1	2
3	2	2	3	2	1	-	-	-	1	3	1	2	1	2	2
4	2	2	2	1	-	-	-	-	1	3	3	2	1	3	2
5	2	2	2	1	1	-	-	-	1	1	3	2	3	1	3
Avg.	2	2	2	2	1	-	-	-	1	2	2	2	2	2	2



Dr. K. Mahadevan
 Dr. K. MAHADEVAN, B.E., M.E., Ph.D.,
 PRINCIPAL
 CMS COLLEGE OF ENGINEERING,
 NAMAKKAL - 637 003.



CMS COLLEGE OF ENGINEERING

(Approved by AICTE, New Delhi and Affiliated to Anna University, Chennai-25)
 CMS Nagar, Eranapuram Post, Namakkal Dt., Pin : 637 003. Tamilnadu, India.

Contact No: 98433 46065, 84899 10651.

Website: www.cmsgroupofinstitutions.in Email: cmscollegeofengg@gmail.com, principal602@gmail.com

CS210	CS3491	ARTIFICIAL INTELLIGENCE AND MACHINE LEARNING
-------	--------	--

CO's - PO's & PSO's Mappings

CO's	PO's												PSO's		
	1	2	3	4	5	6	7	8	9	10	11	12	1	2	3
1	3	2	3	3	-	-	-	-	1	3	3	3	1	2	2
2	1	1	1	3	1	-	-	-	1	2	1	3	2	3	2
3	2	1	2	1	1	-	-	-	2	1	1	3	1	1	1
4	3	1	3	1	-	-	-	-	2	1	2	1	2	2	2
5	3	1	1	2	2	-	-	-	3	1	2	3	2	1	2
Avg.	2	1	2	2	1	-	-	-	2	2	2	3	2	2	2

CS211	CS3492	DATABASE MANAGEMENT SYSTEMS
-------	--------	-----------------------------

CO's - PO's & PSO's Mappings

CO's	PO's												PSO's		
	1	2	3	4	5	6	7	8	9	10	11	12	1	2	3
1	2	2	3	2	1	-	-	-	2	1	1	1	2	1	3
2	3	1	1	1	1	-	-	-	2	3	3	3	3	1	2
3	3	2	3	2	1	-	-	-	2	1	1	2	2	3	3
4	1	2	3	2	-	-	-	-	3	2	3	3	1	2	3
5	1	1	3	3	2	-	-	-	1	3	3	1	2	2	2
Avg.	2	2	3	2	1	-	-	-	2	2	2	2	2	2	3



Handwritten Signature

Dr. K. MAHADEVAN, B.E.,M.E.,Ph.D.,
 PRINCIPAL
 CMS COLLEGE OF ENGINEERING,
 NAMAKKAL - 637 003.



CMS COLLEGE OF ENGINEERING

(Approved by AICTE, New Delhi and Affiliated to Anna University, Chennai-25)
 CMS Nagar, Eranapuram Post, Namakkal Dt., Pin : 637 003. Tamilnadu, India.

Contact No: 98433 46065, 84899 10651.

Website: www.cmsgroupofinstitutions.in Email: cmscollegeofengg@gmail.com, principal602@gmail.com

CS212	CS3401	ALGORITHMS
-------	--------	------------

CO's - PO's & PSO's Mappings

CO's	PO's												PSO's		
	1	2	3	4	5	6	7	8	9	10	11	12	1	2	3
1	3	2	-	-	-		1	-	-	-	-	1	-	1	-
2	2	3	-	-	-	-	1	-	-	-	-	1	-	1	-
3	1	2	3	1	-	-	2	-	-	-	-	-	-	1	1
4	1	1	-	-	-	-	-	-	-	-	-	-	-	-	-
5	1	1	-	-	-	-	-	-	-	-	-	-	-	-	-
Avg.	2.67	1.8	3	1	-	-	1.33	-	-	-	-	1	-	1	1

CS213	CS3451	INTRODUCTION TO OPERATING SYSTEMS
-------	--------	-----------------------------------

CO's - PO's & PSO's Mappings

CO's	PO's												PSO's		
	1	2	3	4	5	6	7	8	9	10	11	12	1	2	3
1	3	1	2	2	-	-	-	-	3	2	3	1	1	2	2
2	2	2	3	1	1	-	-	-	2	1	1	2	2	1	2
3	1	3	2	2	1	-	-	-	2	2	1	1	1	2	2
4	1	3	3	3	-	-	-	-	1	2	1	2	1	3	2
5	3	1	2	1	1	-	-	-	3	2	3	2	2	2	1
Avg.	2	2	2	2	1	-	-	-	2	2	2	2	1	2	2



Dr. K. Mahadevan
 Dr. K. MAHADEVAN, B.E., M.E., Ph.D.,
 PRINCIPAL
 CMS COLLEGE OF ENGINEERING,
 NAMAKKAL - 637 003.



CMS COLLEGE OF ENGINEERING

(Approved by AICTE, New Delhi and Affiliated to Anna University, Chennai-25)
 CMS Nagar, Eranapuram Post, Namakkal Dt., Pin : 637 003. Tamilnadu, India.

Contact No: 98433 46065, 84899 10651.

Website: www.cmsgroupofinstitutions.in Email: cmscollegeofengg@gmail.com, principal602@gmail.com

CS214	GE3451	ENVIRONMENTAL SCIENCES AND SUSTAINABILITY
-------	--------	---

CO's - PO's & PSO's Mappings

CO	PO's												PSO's		
	1	2	3	4	5	6	7	8	9	10	11	12	1	2	3
1	2	1	-	-	-	2	3	-	-	-	-	2	-	-	-
2	3	2	-	-	-	3	3	-	-	-	-	2	-	-	-
3	3	-	1	-	-	2	2	-	-	-	-	2	-	-	-
4	3	2	1	1	-	2	2	-	-	-	-	2	-	-	-
5	3	2	1	-	-	2	2	-	-	-	-	1	-	-	-
Avg.	2.8	1.8	1	1	-	2.2	2.4	-	-	-	-	1.8	-	-	-

CS215	CS3461	OPERATING SYSTEMS LABORATORY
-------	--------	------------------------------

CO's - PO's & PSO's Mappings

CO's	PO's												PSO's		
	1	2	3	4	5	6	7	8	9	10	11	12	1	2	3
1	3	1	3	1	1	-	-	-	1	3	3	3	2	1	3
2	3	1	1	2	2	-	-	-	3	2	1	1	3	1	2
3	3	3	2	1	2	-	-	-	3	3	1	2	2	2	2
4	1	2	2	3	2	-	-	-	3	1	3	1	1	2	1
5	2	2	1	1	3	-	-	-	1	2	2	3	1	3	3
Avg.	2	2	2	2	2	-	-	-	2	2	2	2	2	2	2



K. Mahadevan

Dr. K. MAHADEVAN, B.E., M.E., Ph.D.,
 PRINCIPAL
 CMS COLLEGE OF ENGINEERING,
 NAMAKKAL - 637 003.



CMS COLLEGE OF ENGINEERING

(Approved by AICTE, New Delhi and Affiliated to Anna University, Chennai-25)
CMS Nagar, Eranapuram Post, Namakkal Dt., Pin : 637 003. Tamilnadu, India.

Contact No: 98433 46065, 84899 10651.

Website: www.cmsgroupofinstitutions.in Email: cmscollegeofengg@gmail.com, principal602@gmail.com

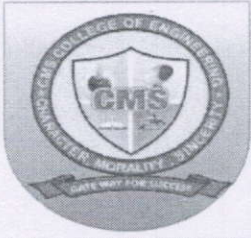
CS216	CS3481	DATABASE MANAGEMENT SYSTEMS LABORATORY
-------	--------	--

CO's - PO's & PSO's Mappings

CO's	PO's												PSO's		
	1	2	3	4	5	6	7	8	9	10	11	12	1	2	3
1	3	3	3	3	-	-	-	-	3	1	3	2	2	3	2
2	2	2	3	2	2	-	-	-	1	2	3	3	2	1	2
3	3	3	2	1	1	-	-	-	1	1	1	3	2	3	3
4	1	3	3	3	1	-	-	-	1	1	3	2	3	1	3
5	3	2	1	1	1	-	-	-	2	2	3	1	3	1	2
Avg.	2	3	2	2	1	-	-	-	2	1	3	2	2	2	2



Dr. K. MAHADEVAN, B.E., M.E., Ph.D.,
PRINCIPAL
CMS COLLEGE OF ENGINEERING,
NAMAKKAL - 637 003.



CMS COLLEGE OF ENGINEERING

(Approved by AICTE, New Delhi and Affiliated to Anna University, Chennai-25)
 CMS Nagar, Eranapuram Post, Namakkal Dt., Pin : 637 003. Tamilnadu, India.

Contact No: 98433 46065, 84899 10651.

Website: www.cmsgroupofinstitutions.in Email: cmscollegeofengg@gmail.com, principal602@gmail.com

III-year

CS301	CS3591	COMPUTER NETWORKS
-------	--------	-------------------

CO's-PO's & PSO's MAPPING

CO's	PO's												PSO's		
	1	2	3	4	5	6	7	8	9	10	11	12	1	2	3
1	-	2	-	-		-	-	-	-	-	-	-	3	-	-
2	-	1	-	-	2	-	-	-	-	-	-	2	-	2	-
3	-	2	-	-	3	-	-	-	-	-	-	-	-	3	-
4	-		-	1	2	-	-	-	-	3	-	-	-	-	-
5	-	3	2	-	-	-	-	-	-	-	-	-	-	-	3
Avg.	-	1	-	-	1	-	-	-	-	1	-	-	-	1	1

CS302	CS3501	COMPILER DESIGN
-------	--------	-----------------

CO's-PO's & PSO's MAPPING

CO's	PO's												PSO's		
	1	2	3	4	5	6	7	8	9	10	11	12	1	2	3
1	3	3	3	3	-	-	-	-	3	3	1	3	2	3	2
2	3	3	3	3	3	-	-	-	3	2	3	2	2	1	2
3	3	3	2	2	3	-	-	-	3	1	1	1	2	2	3
4	3	2	2	1	1	-	-	-	2	3	2	3	1	2	1
5	3	3	3	2	1	-	-	-	2	1	1	3	2	1	2
Avg.	3.00	2.80	2.60	2.20	2.00	-	-	-	2.60	2.00	1.60	2.40	1.80	1.80	2.00



Dr. K. Mahadevan

Dr. K. MAHADEVAN, B.E.,M.E.,Ph.D.,
 PRINCIPAL
 CMS COLLEGE OF ENGINEERING,
 NAMAKKAL - 637 003.



CMS COLLEGE OF ENGINEERING

(Approved by AICTE, New Delhi and Affiliated to Anna University, Chennai-25)
 CMS Nagar, Eranapuram Post, Namakkal Dt., Pin : 637 003. Tamilnadu, India.

Contact No: 98433 46065, 84899 10651.

Website: www.cmsgroupofinstitutions.in Email: cmscollegeofengg@gmail.com, principal602@gmail.com

CS303	CB3491	CRYPTOGRAPHY AND CYBER SECURITY
-------	--------	---------------------------------

CO's-PO's & PSO's MAPPING

CO's	PO's												PSO's		
	1	2	3	4	5	6	7	8	9	10	11	12	1	2	3
1	3	2	1	2	2	-	-	-	1	-	-	1	2	3	3
2	3	3	3	3	3	-	-	-	2	-	-	1	3	3	3
3	3	3	3	3	3	-	-	-	2	-	-	1	3	3	3
4	3	3	3	3	3	-	-	-	2	-	-	1	3	3	3
5	3	2	3	2	3	-	-	-	3	-	-	2	3	2	3
Avg.	3	2.6	2.6	2.6	2.8	-	-	-	2	-	-	1.2	2.8	2.8	3

CS304	CS3551	DISTRIBUTED COMPUTING
-------	--------	-----------------------

CO's-PO's & PSO's MAPPING

CO's	PO's												PSO's		
	1	2	3	4	5	6	7	8	9	10	11	12	1	2	3
1	2	2	3	3	1	-	-	-	2	1	3	3	2	1	1
2	1	3	2	1	2	-	-	-	2	2	2	2	1	3	2
3	2	2	1	3	3	-	-	-	3	2	1	1	1	2	1
4	1	2	2	3	1	-	-	-	3	3	2	1	3	1	1
5	3	3	1	2	3	-	-	-	3	3	3	1	3	2	3
Avg.	1.8	2.4	1.8	2.4	2	-	-	-	2.6	2.2	2.2	1.6	2	1.8	1.6



K. Mahadevan
 Dr. K. MAHADEVAN, B.E., M.E., Ph.D.,
 PRINCIPAL
 CMS COLLEGE OF ENGINEERING,
 NAMAKKAL - 637 003.



CMS COLLEGE OF ENGINEERING

(Approved by AICTE, New Delhi and Affiliated to Anna University, Chennai-25)
 CMS Nagar, Eranapuram Post, Namakkal Dt., Pin : 637 003. Tamilnadu, India.

Contact No: 98433 46065, 84899 10651.

Website: www.cmsgroupofinstitutions.in Email: cmscollegeofengg@gmail.com, principal602@gmail.com

CS305	CCS334	BIG DATA ANALYTICS
-------	--------	--------------------

CO's-PO's & PSO's MAPPING

CO's	PO's												PSO's		
	1	2	3	4	5	6	7	8	9	10	11	12	1	2	3
1	3	3	3	3	3	-	-	-	2	2	3	1	1	3	3
2	3	3	2	3	2	-	-	-	2	2	3	3	2	3	2
3	3	3	3	2	3	-	-	-	2	2	1	2	2	3	3
4	2	3	3	3	3	-	-	-	2	2	3	2	3	3	2
5	3	3	3	3	3	-	-	-	3	1	3	2	3	2	3
Avg.	2.8	3	2.8	2.8	2.8	-	-	-	2.2	1.8	2.6	2	2.2	2.8	2.6

CS306	CCS375	WEB TECHNOLOGIES
-------	--------	------------------

CO's-PO's & PSO's MAPPING

CO's	PO's												PSO's		
	1	2	3	4	5	6	7	8	9	10	11	12	1	2	3
1	3	2	3	3	3	-	-	-	1	3	3	1	3	2	3
2	2	2	2	1	2	-	-	-	2	2	1	3	2	2	2
3	1	1	3	2	3	-	-	-	1	2	1	1	1	2	1
4	2	3	3	1	2	-	-	-	3	1	2	2	2	2	2
5	1	2	3	2	2	-	-	-	2	1	3	1	1	1	2
Avg.	1.8	2	2.8	1.8	2.4	-	-	-	1.8	1.8	2	1.6	1.8	1.8	2



K. Mahadevan
 Dr. K. MAHADEVAN, B.E., M.E., Ph.D.,
 PRINCIPAL
 CMS COLLEGE OF ENGINEERING,
 NAMAKKAL - 637 003.



CMS COLLEGE OF ENGINEERING

(Approved by AICTE, New Delhi and Affiliated to Anna University, Chennai-25)
 CMS Nagar, Eranapuram Post, Namakkal Dt., Pin : 637 003. Tamilnadu, India.

Contact No: 98433 46065, 84899 10651.

Website: www.cmsgroupofinstitutions.in Email: cmscollegeofengg@gmail.com, principal602@gmail.com

CS307	CCS356	OBJECT ORIENTED SOFTWARE ENGINEERING
-------	--------	--------------------------------------

CO's-PO's & PSO's MAPPING

CO's	PO's												PSO's		
	1	2	3	4	5	6	7	8	9	10	11	12	1	2	3
1	2	2	1	2	2	-	-	-	-	1	1	2	2	2	1
2	2	3	2	3	2	-	-	-	2	2	3	2	3	2	1
3	2	3	2	1	1	-	-	-	2	2	3	2	2	3	1
4	2	3	2	2	3	-	-	-	2	2	3	2	2	3	1
5	2	3	1	2	2	-	-	-	-	-	-	1	3	2	2
Avg.	2	2	1	2	2	-	-	-	-	1	1	2	2	2	1

CS308	CS3691	EMBEDDED SYSTEMS AND IOT
-------	--------	--------------------------

CO's-PO's & PSO's MAPPING

CO's	PO's												PSO's		
	1	2	3	4	5	6	7	8	9	10	11	12	1	2	3
1	3	3	3	3	-	-	-	-	1	2	3	3	2	1	3
2	2	1	3	2	2	-	-	-	1	2	2	3	3	1	3
3	3	1	3	3	1	-	-	-	1	2	1	1	1	3	3
4	3	2	3	2	1	-	-	-	1	2	2	3	2	2	1
5	2	3	3	2	2	-	-	-	1	3	3	2	3	1	3
Avg.	2.6	2	3	2.4	1.5	-	-	-	1	2.2	2.2	2.4	2.2	1.6	2.6



Dr. K. Mahadevan

Dr. K. MAHADEVAN, B.E., M.E., Ph.D.,
 PRINCIPAL
 CMS COLLEGE OF ENGINEERING,
 NAMAKKAL - 637 003.



CMS COLLEGE OF ENGINEERING

(Approved by AICTE, New Delhi and Affiliated to Anna University, Chennai-25)
 CMS Nagar, Eranapuram Post, Namakkal Dt., Pin : 637 003. Tamilnadu, India.

Contact No: 98433 46065, 84899 10651.

Website: www.cmsgroupofinstitutions.in Email: cmscollegeofengg@gmail.com, principal602@gmail.com

CS309	CCS339	CRYPTOCURRENCY AND BLOCKCHAIN TECHNOLOGIES
-------	--------	--

CO's-PO's & PSO's MAPPING

CO's	PO's												PSO's		
	1	2	3	4	5	6	7	8	9	10	11	12	1	2	3
1	3	3	2	2	1	-	-	-	1	-	-	2	3	1	1
2	3	3	3	3	1	-	-	-	2	-	-	2	1	2	1
3	3	3	3	3	2	-	-	-	3	-	-	2	2	3	3
4	3	2	3	2	3	-	-	-	3	-	-	2	2	2	3
Avg.	3	2.75	2.75	2.5	1.75				2.25			2	3	2.75	2

CS310	CCS341	DATA WAREHOUSING
-------	--------	------------------

CO's-PO's & PSO's MAPPING

CO	PO's											
	1	2	3	4	5	6	7	8	9	10	11	12
1	3	3	3	2	2	-	-	-	3	-	-	3
2	3	2	2	2	3	-	-	-	2	-	2	2
3	3	3	3	3	-	-	-	-	-	-	-	3
4	3	3	3	3	-	-	-	-	-	-	-	3
5	3	2	2	2	-	2	-	-	-	-	2	2
Avg.	3	2.6	2.6	1.2	2.5	1	-	-	2.5	-	2	2.6



(Signature)
 Dr. K. MAHADEVAN, B.E., M.E., Ph.D.,
 PRINCIPAL
 CMS COLLEGE OF ENGINEERING,
 NAMAKKAL - 637 003.



CMS COLLEGE OF ENGINEERING

(Approved by AICTE, New Delhi and Affiliated to Anna University, Chennai-25)
 CMS Nagar, Eranapuram Post, Namakkal Dt., Pin : 637 003. Tamilnadu, India.

Contact No: 98433 46065, 84899 10651.

Website: www.cmsgroupofinstitutions.in Email: cmscollegeofengg@gmail.com, principal602@gmail.com

CS311	CCS352	MULTIMEDIA AND ANIMATION
-------	--------	--------------------------

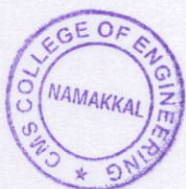
CO's-PO's & PSO's MAPPING

CO's	PO's												PSO's		
	1	2	3	4	5	6	7	8	9	10	11	12	1	2	3
1	3	2	3	2	3	-	-	-	3	2	1	2	3	2	3
2	3	3	3	3	3	-	-	-	3	3	2	2	3	2	3
3	3	3	3	3	3	-	-	-	3	3	2	3	3	2	3
4	3	3	3	3	3	2	-	-	3	3	3	3	3	3	3
5	3	3	3	3	3	2	-	-	3	3	3	3	3	3	3
Avg.	3.00	2.80	3.00	2.80	3.00	2.00	-	-	3.00	2.80	2.20	2.60	3.00	2.40	3.00

CS312	OEE351	RENEWABLE ENERGY SYSTEM
-------	--------	-------------------------

CO's-PO's & PSO's MAPPING

	PO1	PO2	PO3	PO4	PO5	PO6	PO7	PO8	PO9	PO10	PO11	PO12	PSO1	PSO2	PSO3
CO1	3	-	-	-	-	-	-	-	-	-	-	2	3	3	3
CO2	3	2	-	-	-	-	-	-	-	-	-	2	3	3	3
CO3	3	2	-	-	-	-	-	-	-	-	-	2	3	3	3
CO4	3	2	-	-	-	-	-	-	-	-	-	2	3	3	3
CO5	3	2	-	-	-	-	-	-	-	-	-	2	3	3	3
Avg.	3	2	-	-	-	-	-	-	-	-	-	2	3	3	3



Dr. K. Mahadevan
 Dr. K. MAHADEVAN, B.E., M.E., Ph.D.,
 PRINCIPAL
 CMS COLLEGE OF ENGINEERING,
 NAMAKKAL - 637 003.



CMS COLLEGE OF ENGINEERING

(Approved by AICTE, New Delhi and Affiliated to Anna University, Chennai-25)
CMS Nagar, Eranapuram Post, Namakkal Dt., Pin : 637 003. Tamilnadu, India.

Contact No: 98433 46065, 84899 10651.

Website: www.cmsgroupofinstitutions.in Email: cmscollegeofengg@gmail.com, principal602@gmail.com

2. Expected PO and PSO matrices for 2021-2025 batch (Anna University Regulations-2021) is given in the below table.

S.No	Course Name	PO1	PO2	PO3	PO4	PO5	PO6	PO7	PO8	PO9	PO10	PO11	PO12	PSO1	PSO2	PSO3
1	CS101	1.6	2.2	1.8	2.2	1.5	3	3	3	1.6	3	3	3	-	-	-
2	CS102	3	3	1	1	0	0	0	0	2	0	2	3	-	-	-
3	CS103	3	3	1.6	1.2	1.8	1	-	-	-	-	-	1	-	-	-
4	CS104	2.8	1.3	1.6	1	-	1.5	1.8	-	-	-	-	1.5	-	-	-
5	CS105	2	3	3	3	2	-	-	-	-	-	2	2	3	3	-
6	CS106	2	3	3	3	2	-	-	-	-	-	2	2	3	3	-
7	CS107	3	2.4	2.6	1	1	-	-	-	-	-	-	-	-	-	-
8	CS107	2.6	1.3	1.6	1	1	1.4	1.8	-	-	-	-	1.3	-	-	-
9	CS108	3	3	3	3	1	3	3	3	3	3	3	3	-	-	-
10	CS109	3	3	3	3	2.75	3	3	3	2.2	3	3	3	-	-	-
11	CS110	3	3	1	1	1	0	0	0	2	0	2	3	-	-	-
12	CS111	3	1.3	2	1.3	2.3	1	1.3	-	-	-	-	2	-	-	-
13	CS112	2	1.8	1	-	-	-	-	1	-	-	-	2	-	-	1
14	CS113	3	1	2	-	2	-	-	-	-	3	-	2	2	2	-
15	CS114	2	2	2	1	2	1	1	1	2	-	3	2	2	2	-
16	CS115	3	2	-	-	1	1	1	-	-	-	-	2	2	1	1
17	CS116	2	2	3	2	1	2	-	-	2	1	2	2	2	2	-
18	CS117	2.4	2.8	3	3	1.8	3	3	3	3	3	3	3	-	-	-



Dr. K. MAHADEVAN, B.E., M.E., Ph.D.,
PRINCIPAL
CMS COLLEGE OF ENGINEERING,
NAMAKKAL - 637 003.



CMS COLLEGE OF ENGINEERING

(Approved by AICTE, New Delhi and Affiliated to Anna University, Chennai-25)
 CMS Nagar, Eranapuram Post, Namakkal Dt., Pin : 637 003. Tamilnadu, India.

Contact No: 98433 46065, 84899 10651.

Website: www.cmsgroupofinstitutions.in Email: cmscollegeofengg@gmail.com, principal602@gmail.com

II - YEAR

S.No	Course Name	PO1	PO2	PO3	PO4	PO5	PO6	PO7	PO8	PO9	PO10	PO11	PO12	PSO1	PSO2	PSO3
19	CS201	1	3	2	1	-	-	-	-	-	1	-	-	-	-	-
20	CS202	2	2	1	2	2	1	1	-	1	1	1	2	2	2	2
21	CS203	2	2	1	2	2	1	1	-	1	1	1	2	2	2	2
22	CS204	2	2	1	2	2	1	1	-	1	1	1	2	2	2	2
23	CS205	2	1	2	2	2	-	-	-	2	2	1	2	3	2	2
24	CS206	2	2	2	1	2	-	-	-	2	2	2	2	2	2	3
25	CS207	2	2	2	2	2	-	-	-	2	2	2	2	2	2	2
26	CS208	2	2	2	2	1	-	-	-	2	2	2	2	2	3	2
27	CS209	2	2	2	2	1	-	-	-	1	2	2	2	2	2	2
28	CS210	2	1	2	2	1	-	-	-	2	2	2	3	2	2	2
29	CS211	2	2	3	2	1	-	-	-	2	2	2	2	2	2	3
30	CS212	2	2	2	2	1	-	-	-	2	2	2	2	1	2	2
31	CS213	2	2	2	2	1	-	-	-	2	2	2	2	1	2	2
32	CS214	2.8	1.8	1	1	-	2.2	2.4	-	-	-	-	1.8	-	-	-
33	CS215	2	2	2	2	2	-	-	-	2	2	2	2	2	2	2
34	CS216	2	3	2	2	1	-	-	-	2	1	3	2	2	2	2



[Handwritten Signature]

Dr. K. MAHADEVAN, B.E., M.E., Ph.D.,
 PRINCIPAL
 CMS COLLEGE OF ENGINEERING,
 NAMAKKAL - 637 003.



CMS COLLEGE OF ENGINEERING

(Approved by AICTE, New Delhi and Affiliated to Anna University, Chennai-25)
CMS Nagar, Eranapuram Post, Namakkal Dt., Pin : 637 003. Tamilnadu, India.

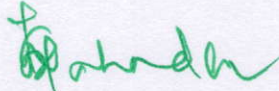
Contact No: 98433 46065, 84899 10651.

Website: www.cmsgroupofinstitutions.in Email: cmscollegeofengg@gmail.com, principal602@gmail.com

III - year

S.NO	Course Name	PO1	PO2	PO3	PO4	PO5	PO6	PO7	PO8	PO9	PO10	PO11	PO12	PSO1	PSO2	PSO3
35	CS301	-	1	-	-	1	-	-	-	-	1	-	-	-	1	1
36	CS302	3.00	2.80	2.60	2.20	2.00	-	-	-	2.60	2.00	1.60	2.40	1.80	1.80	2.00
37	CS303	3	2.6	2.6	2.6	2.8	-	-	-	2	-	-	1.2	2.8	2.8	3
38	CS304	1.8	2.4	1.8	2.4	2	-	-	-	2.6	2.2	2.2	1.6	2	1.8	1.6
39	CS305	2.8	3	2.8	2.8	2.8	-	-	-	2.2	1.8	2.6	2	2.2	2.8	2.6
40	CS306	1.8	2	2.8	1.8	2.4	-	-	-	1.8	1.8	2	1.6	1.8	1.8	2
41	CS307	2	2	1	2	2	-	-	-	-	1	1	2	2	2	1
42	CS308	2.6	2	3	2.4	1.5	-	-	-	1	2.2	2.2	2.4	2.2	1.6	2.6
43	CS309	3	2.75	2.75	2.5	1.75	-	-	-	2.25	-	-	2	3	2.75	2
44	CS310	3	2.6	2.6	1.2	2.5	1	-	-	2.5	-	2	2.6	-	-	-
45	CS311	3.00	2.80	3.00	2.80	3.00	2.00	-	-	3.00	2.80	2.20	2.60	3.00	2.40	3.00
46	CS312	3	2	-	-	-	-	-	-	-	-	-	2	3	3	3




Dr. K. MAHADEVAN, B.E., M.E., Ph.D.,
PRINCIPAL
CMS COLLEGE OF ENGINEERING,
NAMAKKAL - 637 003.



CMS COLLEGE OF ENGINEERING

(Approved by AICTE, New Delhi and Affiliated to Anna University, Chennai-25)
CMS Nagar, Eranapuram Post, Namakkal Dt., Pin : 637 003. Tamilnadu, India.
Contact No: 98433 46065, 84899 10651.

Website: www.cmsgroupofinstitutions.in Email: cmscollegeofengg@gmail.com, principal602@gmail.com

3. Attainment of Course Outcomes for the Computer Science and Engineering

The collection of data for CO attainment is done through Assessment Methods. The Assessment Methods used for the assessment of COs by the Department of Computer Science and Engineering is listed in Table.

Assessment Methods

S.No	Methods/Tools	Frequency of assessment
1.	Internal Tests	03/Semester
2.	Assignment & Tutorials	03/Semester & 06/Semester
3.	University Examination	01/Semester
4.	Project Reviews	03/Semester
5.	Technical Seminars	03/Semester

Quality and relevance of assessment processes and tools used

The Quality and relevance of assessment processes and tools used are described below:

1. Internal Tests:

Three Internal tests are conducted in regular intervals during each semester as per the schedule given by Anna University, Chennai. These are conducted to cover portions in stage from all the five units in each course of study to match all the five COs.

The question paper contains:

Short questions:	Part-A 10 marks (2*5=10)
Descriptive questions:	Part-B 26 marks (2*13=26)
Case Studies or Descriptive questions:	Part-C 14 marks (1*14=14)
	Total 50 marks



Dr. K. MAHADEVAN, B.E.,M.E.,Ph.D.,
PRINCIPAL
CMS COLLEGE OF ENGINEERING,
NAMAKKAL - 637 003.



CMS COLLEGE OF ENGINEERING

(Approved by AICTE, New Delhi and Affiliated to Anna University, Chennai-25)
CMS Nagar, Eranapuram Post, Namakkal Dt., Pin : 637 003. Tamilnadu, India.

Contact No: 98433 46065, 84899 10651.

Website: www.cmsgroupofinstitutions.in Email: cmscollegeofengg@gmail.com, principal602@gmail.com

The tests are conducted for duration of one hour and thirty minutes for each course. The question paper is set to measure the attainment level of the respective CO directly based on the performance of the internal test. A sample internal test question paper is shown below.

3. Assignments

Assignments are being considered as one of the entity for the calculation of attainment of Cos. Three assignments are given for a course to the students in a semester. The assignments questions are framed by the faculty handling the particular course,

3. Tutorials

Tutorials are being considered as one of the entity for the calculations of attainment of Cos. Up to six tutorials are given for a course to the students in a semester.

4. University Examinations

University examinations have an influence in the attainment of the specific COs with respect to the POs. University examinations accounts for 60% weightage for the assessment of the COs. The examinations are conducted for 100 marks covering portions of all five units of the particular course. The marks are uniformly distributed over all the five units. A sample University examination question paper is furnished below:

5. Technical Seminars

The Rubrics for Presentation Skills and Technical Seminar was prepared with 5 sub-heading namely, Presentation, Content, Person, Novelty and Questionnaire.

The performance indicators for presentation are the following:

- * Slide Quality
- * Voice and Delivery Skills
- * The style of presentation
- *The tool and the aid for presentation



Dr. K. MAHADEVAN, B.E.,M.E.,Ph.D.,
PRINCIPAL
CMS COLLEGE OF ENGINEERING,
NAMAKKAL - 637 003.



CMS COLLEGE OF ENGINEERING

(Approved by AICTE, New Delhi and Affiliated to Anna University, Chennai-25)
CMS Nagar, Eranapuram Post, Namakkal Dt., Pin : 637 003. Tamilnadu, India.

Contact No: 98433 46065, 84899 10651.

Website: www.cmsgroupofinstitutions.in Email: cmscollegeofengg@gmail.com, principal602@gmail.com

The performance indicators for Content are the following:

- * Current Trending
- * Understanding the Fundamentals
- * Application oriented/content rich
- *The summarization

The performance indicators for the individual presenter are the following:

- * The Attire
- * The Readiness in Sharing
- * Respectful Gestures
- * The co-ordination

The performance indicators for the Novelty are the following:

- * Innovation
- * Non obviousness
- * The new Tools
- * The real time models

The performance indicators for Questionnaire are the following:

- * Expertise on the content
- * Listening and understanding the query
- *Ability of interaction
- *Preparedness to answer

4. Attainment of Course Outcomes of all courses with respect to set attainment levels

Course Outcomes are mapped to Program Outcomes in order to measure the attainment levels. Attainment Levels of COs are based on the percentage of students getting more than the average marks in direct assessment methods, such as Internal Tests, Assignments, Tutorials, Project Reviews, Technical Presentation and University examinations as follows:



Dr. K. MAHADEVAN, B.E., M.E., Ph.D.,
PRINCIPAL
CMS COLLEGE OF ENGINEERING,
NAMAKKAL - 637 003.



CMS COLLEGE OF ENGINEERING

(Approved by AICTE, New Delhi and Affiliated to Anna University, Chennai-25)
CMS Nagar, Eranapuram Post, Namakkal Dt., Pin : 637 003. Tamilnadu, India.

Contact No: 98433 46065, 84899 10651.

Website: www.cmsgroupofinstitutions.in Email: cmscollegeofengg@gmail.com, principal602@gmail.com

Attainment Level 1: 50% students scoring more than average percentage marks in Internal Tests, Assignments and University Examination.

Attainment Level 2: 60% students scoring more than average percentage marks in Internal Tests, Assignments and University Examination

Attainment Level 3: 70% students scoring more than average percentage marks in Internal Tests, Assignments and University Examination

Attainment is measured in term of actual percentage of students getting set percentage of marks and the set percentage can be faced by the faculty handling the course and it depends on the importance and nature of the course. If targets are achieved, then all the course outcomes are attained for that year. If targets are not achieved, an action plan is put in place to attain the targets in subsequent years.

5. Attainment tools and processes used for measuring the attainment of each of the program Outcomes and Program Specific Outcomes

Attainments of Program Outcomes (POs) and program Specific Outcomes (PSOs) have been validated through Internal Tests, Assignments and University examinations.

Assessment Tools

The undergraduate program of Computer Science and Engineering is a credit based continuous evaluation system. Evaluation is accomplished by the course faculty throughout the semester and the university examination is conducted by the university. The direct assessment for the attainment of Pos and PSOS contributed 80%.

Internal Test I

This test is conducted within 4-5 weeks after the commencement of the semester. The syllabus of the internal test includes 30-35% of the total course content.

Internal Test II

This test is conducted at the mid of the semester. The syllabus of the internal test is the next 30-35% of the total course content.



Dr. K. MAHADEVAN, B.E.,M.E.,Ph.D.,
PRINCIPAL
CMS COLLEGE OF ENGINEERING,
NAMAKKAL - 637 003.



CMS COLLEGE OF ENGINEERING

(Approved by AICTE, New Delhi and Affiliated to Anna University, Chennai-25)
CMS Nagar, Eranapuram Post, Namakkal Dt., Pin : 637 003. Tamilnadu, India.

Contact No: 98433 46065, 84899 10651.

Website: www.cmsgroupofinstitutions.in Email: cmscollegeofengg@gmail.com, principal602@gmail.com

Internal Test III

This test is conducted at the end of the semester. The syllabus is the remaining 30%-40% of the total course content.

Assignments/Tutorials

Three assignments and up to six tutorials are prepared for all the subjects to evaluate the attainment of POs and PSOs.

University Examinations

This is conducted by the university at the end of each semester.

Practical Courses

Continuous monitoring of Pos and PSOs is evaluated through student performance in the laboratory classes, viva-voce and Seminars.

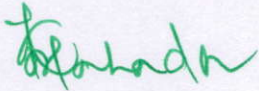
6. A Sample CO-PO & PSO attainment form using the assessment tools

CMS College Of Engineering- Namakkal- 637003

Department Of Computer Science and Engineering

Attainment of	
Course Outcomes (Cos), Program Outcomes (pos) and Program Specific Outcomes (PSOs)	
Course: CB3491/ Cryptography And Cyber Security	Academic Year: 2023-2024
Sem / Sec: V	No of Students: 20
Course Coordinator: S.Dhinesh	Faculty: K.Ramya




Dr. K. MAHADEVAN, B.E.,M.E.,Ph.D.,
PRINCIPAL
CMS COLLEGE OF ENGINEERING,
NAMAKKAL - 637 003.



CMS COLLEGE OF ENGINEERING

(Approved by AICTE, New Delhi and Affiliated to Anna University, Chennai-25)
CMS Nagar, Eranapuram Post, Namakkal Dt., Pin : 637 003. Tamilnadu, India.

Contact No: 98433 46065, 84899 10651.

Website: www.cmsgroupofinstitutions.in Email: cmscollegeofengg@gmail.com, principal602@gmail.com

1. Correlation between the Course and the program Outcomes (Pos) and Program Specific Outcomes(PSOs)

1.1 Course Outcomes (Cos)

CS303	CB3491	CRYPTOGRAPHY AND CYBER SECURITY
CS303.1		Understand the fundamentals of networks security, security architecture, threats and vulnerabilities .
CS303.2		Apply the different cryptographic operations of symmetric cryptographic algorithms
CS303.3		Apply the different cryptographic operations of public key cryptography
CS303.4		Apply the various Authentication schemes to simulate different applications.
CS303.5		various cyber crimes and cyber security

a. Program Outcomes (POs)

Engineering graduates will be able to

PO1.Engineering knowledge: Apply the knowledge of mathematics, science, engineering fundamentals, and an engineering specialization to the solution of complex engineering problems

PO2.Problem analysis: Identify, formulate, review research literature, and analyze complex engineering problems reaching substantiated conclusions using first principles of mathematics, natural sciences, and engineering sciences.

PO3.Design/development of solutions: Design solutions for complex engineering problems and

design system components or processes that meet the specified needs with appropriate consideration for the public health and safety, and the cultural, societal, and environmental considerations

PO4.Conduct investigations of complex problems: Use research-based knowledge and research methods including design of experiments, analysis and interpretation of data, and synthesis of the information to provide valid conclusions.



Dr. K. MAHADEVAN, B.E.,M.E.,Ph.D.,
PRINCIPAL
CMS COLLEGE OF ENGINEERING,
NAMAKKAL - 637 003.



CMS COLLEGE OF ENGINEERING

(Approved by AICTE, New Delhi and Affiliated to Anna University, Chennai-25)
CMS Nagar, Eranapuram Post, Namakkal Dt., Pin : 637 003. Tamilnadu, India.

Contact No: 98433 46065, 84899 10651.

Website: www.cmsgroupofinstitutions.in Email: cmscollegeofengg@gmail.com, principal602@gmail.com

PO5.Modern tool usage: Create, select, and apply appropriate techniques, resources, and modern engineering and IT tools including prediction and modeling to complex engineering

activities with an understanding of the limitations.

PO6.The engineer and society: Apply reasoning informed by the contextual knowledge to assess societal, health, safety, legal and cultural issues and the consequent responsibilities relevant to the professional engineering practice.

PO7.Environment and sustainability: Understand the impact of the professional engineering solutions in societal and environmental contexts, and demonstrate the knowledge of, and need for sustainable development.

PO8.Ethics: Apply ethical principles and commit to professional ethics and responsibilities and norms of the engineering practice.

PO9.Individual and team work: Function effectively as an individual, and as a member or leader in diverse teams, and in multidisciplinary settings.

PO10.Communication: Communicate effectively on complex engineering activities with the engineering community and with society at large, such as, being able to comprehend and write effective reports and design documentation, make effective presentations, and give and receive clear instructions.

PO11.Project management and finance: Demonstrate knowledge and understanding of the engineering and management principles and apply these to one's own work, as a member and leader in a team, to manage projects and in multidisciplinary environments.

PO12.Life-long learning: Recognize the need for, and have the preparation and ability to engage in independent and life-long learning in the broadest context of technological change.



Dr. K. MAHADEVAN, B.E.,M.E.,Ph.D.,
PRINCIPAL
CMS COLLEGE OF ENGINEERING,
NAMAKKAL - 637 003.



CMS COLLEGE OF ENGINEERING

(Approved by AICTE, New Delhi and Affiliated to Anna University, Chennai-25)
CMS Nagar, Eranapuram Post, Namakkal Dt., Pin : 637 003. Tamilnadu, India.

Contact No: 98433 46065, 84899 10651.

Website: www.cmsgroupofinstitutions.in Email: cmscollegeofengg@gmail.com, principal602@gmail.com

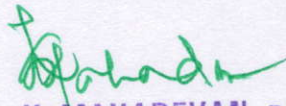
2. PROGRAM SPECIFIC OUTCOMES (PSOs)

PSO1. Exhibit design and programming skills to build and automate business solutions using cutting edge technologies.

PSO2. Strong theoretical foundation leading to excellence and excitement towards research, to provide elegant solutions to complex problems.

PSO3. Ability to work effectively with various engineering fields as a team to design, build and develop system applications.




Dr. K. MAHADEVAN, B.E., M.E., Ph.D.,
PRINCIPAL
CMS COLLEGE OF ENGINEERING,
NAMAKKAL - 637 003.



CMS COLLEGE OF ENGINEERING

(Approved by AICTE, New Delhi and Affiliated to Anna University, Chennai-25)
 CMS Nagar, Eranapuram Post, Namakkal Dt., Pin : 637 003. Tamilnadu, India.

Contact No: 98433 46065, 84899 10651.

Website: www.cmsgroupofinstitutions.in Email: cmscollegeofengg@gmail.com, principal602@gmail.com

S.No	Reg.No.	Name of the Student	CS3591-Computer Networks			CS3501-Compiler Design			CB3491-Cryptography and Cyber			CS3551-Distributed Computing			MX3084-Disaster Risk Reduction			CCS334-Big Data Analytics			CCS375-Web Technologies		
			TEST 1 (MAX MARK 100)	TEST 2 (MAX MARK 100)	UNIV	TEST 1 (MAX MARK 100)	TEST 2 (MAX MARK 100)	UNIV	TEST 1 (MAX MARK 100)	TEST 2 (MAX MARK 100)	UNIV	TEST 1 (MAX MARK 100)	TEST 2 (MAX MARK 100)	UNIV	TEST 1 (MAX MARK 100)	TEST 2 (MAX MARK 100)	UNIV	TEST 1 (MAX MARK 100)	TEST 2 (MAX MARK 100)	UNIV	TEST 1 (MAX MARK 100)	TEST 2 (MAX MARK 100)	UNIV
1	620521104001	ASHRAF ALI A	91	76	A	89	86	A	85	86	B+	86	83	B+	91	80	A	90	90	A	90	90	A
2	620521104008	GUNASEKARAN P	86	76	A	84	82	B+	86	82	B+	83	87	B+	89	89	A+	88	88	A	88	88	A
3	620521104009	JAYASURYA S	86	85	A	83	81	B+	82	81	B	79	79	B+	87	87	A+	87	87	A	87	87	A
4	620521104011	KAVIYA S	88	88	A	87	84	A	86	84	A	80	76	B+	89	89	A+	89	91	A	89	89	A
5	620521104012	KEERTHANA M	85	84	B+	79	80	A	82	80	A	81	76	B	89	89	A+	87	89	A	87	87	A
6	620521104013	KUMARESAN R	80	88	B+	76	84	B+	81	84	B+	79	85	B+	84	84	A+	89	87	A	89	89	A
7	620521104016	NANDHAKUMAR K	82	85	B+	76	84	B+	84	84	B	84	88	U	88	88	A+	87	89	A	87	87	A
8	620521104017	NAVEENKUMAR P	80	80	B+	85	85	B+	85	85	B	85	85	B+	90	90	A+	89	89	A	89	89	A
9	620521104019	NIKITHA M	84	71	B+	88	88	A	80	88	B	80	80	B+	89	89	A+	88	84	A	88	88	A
10	620521104020	NIVETHA R	83	83	B+	84	84	A	80	84	U	80	80	B+	89	89	A+	88	88	A	88	88	A
11	620521104022	PRAKASH S	90	90	B+	88	88	B+	86	88	B+	81	81	U	88	88	A+	89	89	A	89	89	A
12	620521104025	SABARI B	83	83	B+	85	85	A	82	85	U	82	82	U	84	84	A+	87	87	A	87	87	A
13	620521104026	SANJAI A	81	81	B+	80	80	A	82	80	U	82	82	U	84	84	A+	89	89	A	89	89	A
14	620521104027	SANJAY P	79	80	UA	71	71	UA	80	71	U	80	80	U	80	80	A	89	89	A	89	89	A
15	620521104028	SUJILKUMAR M	80	86	B+	84	84	A	86	84	U	86	86	U	90	90	A+	87	87	A	87	87	A
16	620521104301	ANANTH S	78	78	U	78	78	B+	78	78	U	78	78	U	79	79	A+	81	81	B+	80	80	B+
17	620521104302	ARULMURUGAN S	88	86	A	86	86	A	86	86	B	86	86	B+	88	88	A+	87	87	A	87	87	B+
18	620521104303	BOOBALAN S	89	89	A	84	84	A	89	89	U	90	90	B+	91	91	O	89	89	A	89	89	B+
19	620521104304	DINESH M	91	92	A	90	90	A	92	92	A+	92	92	A	96	96	O	87	87	A	87	87	A
20	620521104308	MEERA C	81	80	B+	82	82	A	80	80	B+	80	80	B+	81	81	A+	87	87	A	87	87	B+
No of Students >=70%			20	20	18	20	20	19	20	20	8	20	20	12	20	20	20	20	20	20	20	20	20
CO1			3		2	3		2	3		1	3		2	3		3	3		3	3		3
CO2			3		3	3		3	3		3	3		3	3		3	3		3	3		3
CO3			3	3	3	3	3	3	3	3	3	3	3	3	3	3	3	3	3	3	3	3	3
CO4				3	3		3	3		3	3		3	3		3	3		3	3		3	3
CO5				3	3		3	3		3	3		3	3		3	3		3	3		3	3



Dr. K. Mahadevan
Dr. K. MAHADEVAN, B.E.,M.E.,Ph.D.,
 PRINCIPAL
 CMS COLLEGE OF ENGINEERING,
 NAMAKKAL - 637 003.

8 30% of student above 70% -1 (Low)

12 31 - 49 % of student above 70% -2 (Medium)

20 50% of student above 70% -3 (High)



CMS COLLEGE OF ENGINEERING

(Approved by AICTE, New Delhi and Affiliated to Anna University, Chennai-25)
 CMS Nagar, Eranapuram Post, Namakkal Dt., Pin : 637 003. Tamilnadu, India.

Contact No: 98433 46065, 84899 10651.

Website: www.cmsgroupofinstitutions.in Email: cmscollegeofengg@gmail.com, principal602@gmail.com

CS303	TEST 1	TEST 2	INT	UNIV
CO1	3	0	3	3
CO2	3	0	3	3
CO3	3	3	3	3
CO4	0	3	3	3
CO5	0	3	3	3
INTERNAL/UNIV ATTAINMENTS			3.00	3.00
WEIGHTAGE			40%	60%
CO ATTAINMENT FOR THE SUBJECT			1.20	1.80
FINAL CO ATTAINMENT FOR THE SUBJECT			3.00	

CO Vs PO															
SUBJECT	CRYPTOGRAPHY AND CYBERSECURITY														
	PO's												PSO's		
Course Outcome	1	2	3	4	5	6	7	8	9	10	11	12	1	2	3
CS303.1	3	2	1	2	2	-	-	-	1	-	-	1	2	3	3
CS303.2	3	3	3	3	3	-	-	-	2	-	-	1	3	3	3
CS303.3	3	3	3	3	3	-	-	-	2	-	-	1	3	3	3
CS303.4	3	3	3	3	3	-	-	-	2	-	-	1	3	3	3
CS303.5	3	2	3	2	3	-	-	-	3	-	-	2	3	2	3
Avg	3	2.6	2.6	2.6	2.8				2			1.2	2.8	2.8	3
CO ATT	2.76	2.39	2.39	2.39	2.58				1.84			1.1	2.58	2.76	2.76



Dr. K. Mahadevan

Dr. K. MAHADEVAN, B.E., M.E., Ph.D.,
 PRINCIPAL
 CMS COLLEGE OF ENGINEERING,
 NAMAKKAL - 637 003.



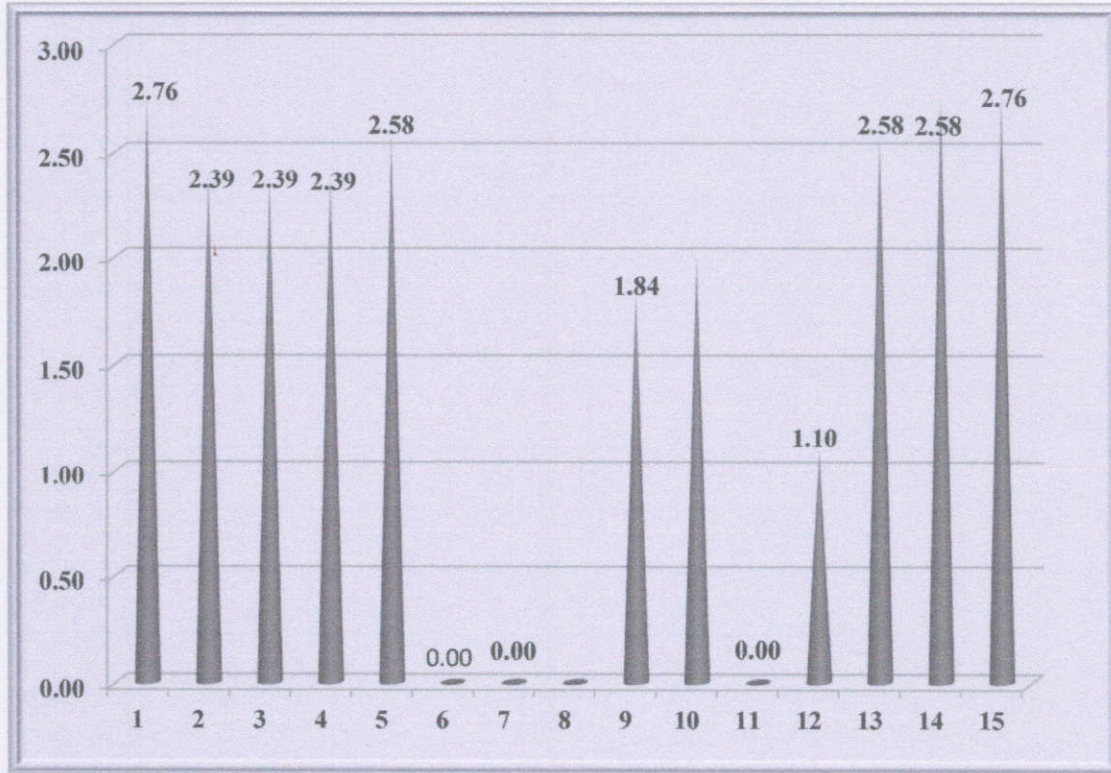
CMS COLLEGE OF ENGINEERING

(Approved by AICTE, New Delhi and Affiliated to Anna University, Chennai-25)

CMS Nagar, Eranapuram Post, Namakkal Dt., Pin : 637 003. Tamilnadu, India.

Contact No: 98433 46065, 84899 10651.

Website: www.cmsgroupofinstitutions.in Email: cmscollegeofengg@gmail.com, principal602@gmail.com



Dr. K. MAHADEVAN, B.E., M.E., Ph.D.,
PRINCIPAL
CMS COLLEGE OF ENGINEERING,
NAMAKKAL - 637 003.